



Hungarian Orienteering

Sprint Championship (ROB) and
Sprint Relay Championship (ORVB)

ESZTERGOM

Bulletin 2of





MAIN PATRONS

Ádám Hernádi Mayor of Esztergom
Gábor Erős Member of Parliament
Dr. László Urbán MAGYAR SUZUKI ZRT. Deputy CEO

Patrons:

András Neuzer CEO of Neuzer Kerékpár Kft
Balázs Kovács President of MTFFSZ
István Öry CEO of Aquasziget Esztergom
Dr. Csaba Török, Primatial Basilica of the Assumption of the Blessed Virgin Mary and
St Adalbert, Parish Govenor

Organizers:

On behalf of the Hungarian Orienteering Association
Homokbucka Környezetvédő, Kulturális, Szabadidő és Tájékozási Futó Egyesület
6120 Kiskunmajsa, Fő u. 59. paskujm@gmail.com, +36-30-206-8535 and
Kecskeméti Zöld Sportok Egyesülete 6000 Kecskemét, Kiskőrösi út 18-20.
hajnal.zsolt@logall.hu, +36-70-368-1209

Competition Committee:

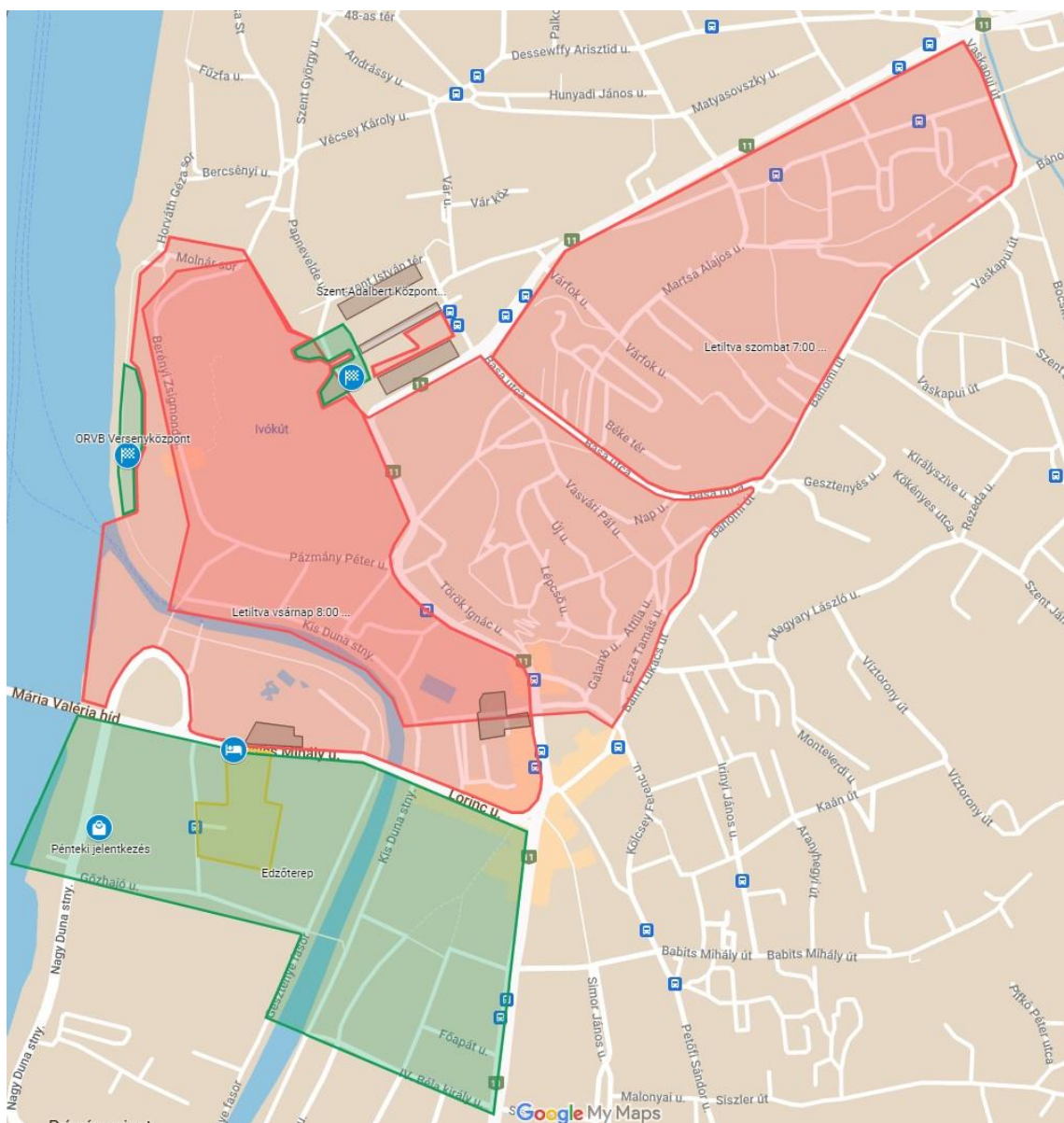
President: Mátyás Paskuj
Vice President: Zsolt Hajnal
Courses: Gábor Forrai, Miklós Forrai
Controllers: Zoltán Mihácz (WRE, ROB), Tamás Magyar (ORVB)
SI: Gábor Józsa, Dominika Józsa, László Balaskó jr.
Speaker: Zoltán Szlávik
Live Broadcast: András Ambrus, Gábor Ács
Start: Attila Varsányi
Doctor: Dr. Andrea Cserjés

PROGRAM:

ROB qualification: September 17, 2022. 09:00 AM
ROB final: September 17, 2022. 2:30 PM
ORVB: September 18, 2022. 10:00 AM

LOCATIONS:

All location related to the competition can be viewed on the info map bellow:
<https://www.google.com/maps/d/edit?mid=14noxkF56lDDjO6pZ2wOF95sLxJR5b6o&usp=sharing>



REGISTRATION:

September 16, Friday: 6:00-9:00 PM a Rugby Club Hostel (Esztergom, Nagy-Duna sétány 1.) GPS: 47.793286, 18.732944

September 17, Saturday: 7:30-8:30 AM, and for clubs only starting on the final 1:00-2:00 PM in the competition center: Esztergom, Szent István tér (area in front of the Basilica) GPS: 47.799378, 18.737997

September 18, Sunday: 8:00-9:00 AM in the competition center, Esztergom, Erzsébet Park (for clubs only starting in ORVB-on) GPS: 47.798416, 18.733615

It is not possible to registration individually, the competition materials will only be issued to clubs together!

ENTRY TO OPEN CATEGORIES:

At the e-nevezes.hu WEB page. Payment in advance by bank transfer or in cash on site.



Entry fee: September 12-16. 2.000,- HUF, on site 2.500,- HUF (Saturday 7:30-9:00 AM, Sunday 8:00 AM-1:00 PM we only accept entries until printed maps ran out).

RENTAL of SI CARD:

500 HUF / stages, (free to ages 14), SIAC card fee: 800 Ft/ stage.

PAYMENT:

We will issue the invoice for the entries received on the basis of the invoice request specified in the entry system, which we ask to be settled by September 15, 2022 at the latest.

START NUMBER:

In all three stages of the championship wearing the start number is mandatory! In sprint final for M/W 21 the "A" run will have a change of start number. We do not provide a safety pin everyone must take care of the fastening themselves!

RESULTS:

The results lists are constantly updated online on the live.mtfsz.hu webpage. There will be no paper-based results announcement for environmental reasons. Information about the competition is also displayed on the on-site projectors.

LIVE STREAM:

During the ROB final a live stream will be available for categories M/W21A on the on-site projectors and online on the ROB Facebook page.

ACCOMMODATION:

Gymnasium accommodation: Vitéz János Katolikus Általános Iskola gymnasium: 2500 Esztergom, Helischer utca 10., approach and parking from Táncsics Mihály utca GPS: 47.794078, 18.735831. The accommodation can be assume from 19:00 September 16 2022 Friday with the wristband received at the race office. The gymnasium will be closed on Saturday from 13:00 to 17:30.

The accommodation must be vacated no later than 9 AM on Sunday, September 18.

Accommodation in the gymnasium must be paid at the organizers in cash or by bank transfer on the issued invoice.

TRANSPORT:

Since the competition locations are accessible by public transport, we do not organize them.

PRIZES:

1-3. place awarding of medals and honorariums, the youth and adult categories 4-6. will received a diploma.

The winners of the W1E and M21E categories will win a NEUZER Ravenna 50 type bike. There will be no announcement in the Open categories.

ORIEENTERING BATH PARTY:

On Saturday, September 17 between 20-24 PM, we will organize a private orienteering bath party in Esztergom at Aquasziget Spa (2500 Esztergom, Táncsics Mihály u. 5.). At this time, only orienteers and their family members may stay in the spa.



The entrance fee is 1000 HUF/person, which can be purchased at the entrance of the spa. Entry by presenting the start number A family member can also enter the spa with the competitor wearing the start number-after exchanging a ticket.

Website: <https://www.aquasziget.hu>

In the spa all indoor unit can be use and a special DJ ensures a good atmosphere.

OTHERS:

- **Commercial activity** at the competition is only possible with the permission of the organizers. This must be request from the competition president: Mátyás Paskuj +36 30 206-8535.
- **CLUB TENTS** may **NOT** be set up at the races.
- Competitors will receive **refreshments** at the finish line in all three runs.
- The relevant provisions of the championship system the competition regulations apply to matters of technical organization.
- We operate a **kindergarten** on both days of the competition.
Saturday 8:30-12:30 and 14:00-18:00, Sunday 9:30-13:00.
- During the qualification and final of ROB a **safe deposit box** operates in the Competition Center between 8:30-12:30 and 14:00-18:00. **The organizers assumed no responsibility for the values placed in other areas.**
- A competition doctor can be found in the Competition Center on both days.
- There is a **buffet** in the Competition Center on both days, with hot and cold foods.
- It is forbidden to run with a dog during a race and dogs can only be led on a leash in the finish area.
- On both days of the event we take photos and videos of participants, which can be published in offline and online media. The recordings are made by cameramen standing and moving at several point of the competition.
- By entry and starting the event all participants consent to being recorded and played in various media.
- It is forbidden to bring and use any telecommunication device (especially smartphones, tablets) with internet connection and capable of displaying maps into the quarantines! Violation of this regulation will be result disqualification. Adherence to the fair play rules is monitored by competition judges.
- Everyone participates in their own risk!
- More information in databank of mtfisz.hu and on the website of the competition.



Sprint Championship (ROB) Qualification

COMPETITION CENTER:

Esztergom, Szent István tér, area in front of Basilica (GPS: 47.799378, 18.737997)

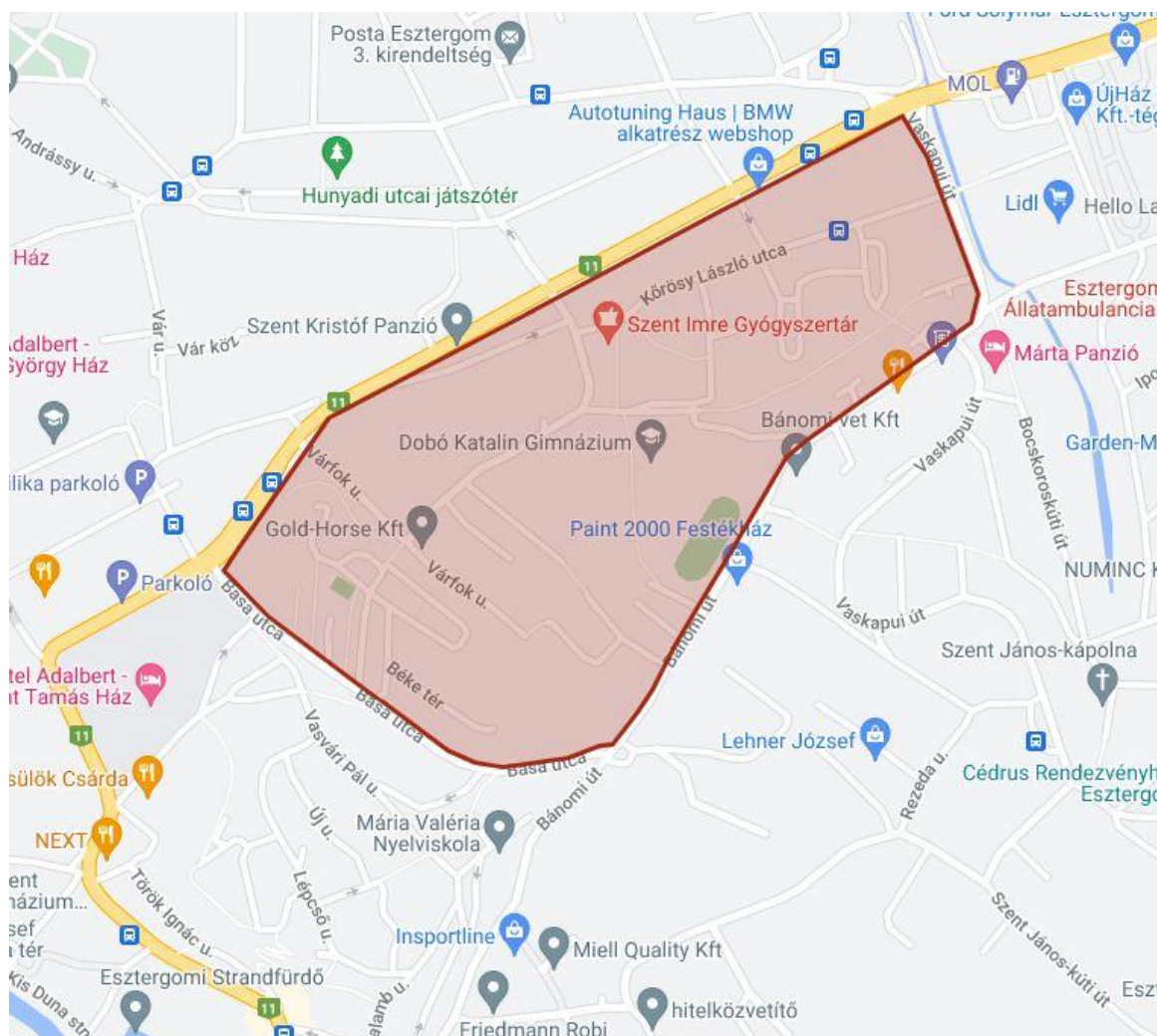
PARKING:

There will be no organized parking.

Parking in the city center is free in most places on Saturday and Sunday

A limited number of parking spaces are available around the competition center! We recommended using more distant parking lots and approaching the competition center area on foot! If possible, leave your vehicles near the accommodation.

EMBARGOED AREA:



In the prohibited area marked on the info map orienteering activities (navigating with map, testing a route, exploring different areas etc.) are prohibited until the end of the race. Before the competition and during the race **September 17 7:00-12:30 only as competitor allowed to stay!** Violators may be disqualified from the competition!



„0” TIME: 9:00 AM

CLOSING of QUARANTINE: 9:10 AM

START and QUARANTINE:

- EC – Quarantine distance: 150 meter, 0 m elevation, on orange tape.
- Quarantine entrance – Prestart distance: 150 m, 0 m elev., on blue-white tape.
- Prestart – Start distance: 600 m, 0 m, 0 m elev., on blue-white tape.

It is mandatory to follow the tapes!

The start quarantine open at 8:20 AM and **everyone must enter by 9:10 AM!**

A sufficient number of toilet available in the quarantine.

There is enough spacing to warm up.

Additional symbols can pick up at Prestart.

Please take care of cleanliness!

HOW TO START:

- 10 min: departure from prestart
- 4 min: admission
- 3 min: crossing in the pedestrian crossing
- 2 min: clean, check, SIAC test
- 1 min: standing next to the map
- 0 min: start

The map start is located 40 meters from the time start along the mandatory route.

TERRAIN:

Residential complex with parks, playgrounds, courtyards of public institutions, medium elevations. Runnability is excellent, visibility is somewhat limited due to medium coverage.

Most of the terrain is not closed to vehicular traffic. In general light traffic is expected.

Run carefully! 70-80% of the tracks are paved. Recommended running clothing: cross-country or training shoes with short legged clothing.

The use of spiked shoes is prohibited!

MAP:

ISSprOM 2019-2, Surveyed in 2022.

Scale, contour and size:

W/M 14-21 categories:	1:4000 / 2m, A4
W/M 35+ categories:	1:3000 / 2m, A3

The maps are digitally printed on waterproof Pretex paper, so we do not provide foil.

The map was made by Gábor Forrai Gábor and Miklós Forrai.

The code will not be shown in addition to the number of the points on the map.

SYMBOLS – EXTRA SYMBOL:

The symbols can be found on the map, be also provide extra symbol.

The extra symbol can be picked up at **prestart**, we provide adhesive tape and scissors to put it on.

FINISH:

There will be a distance finish. You can get back to the competition center on yellow-black tapes, distance 250 m. Maps do not need to be collected.

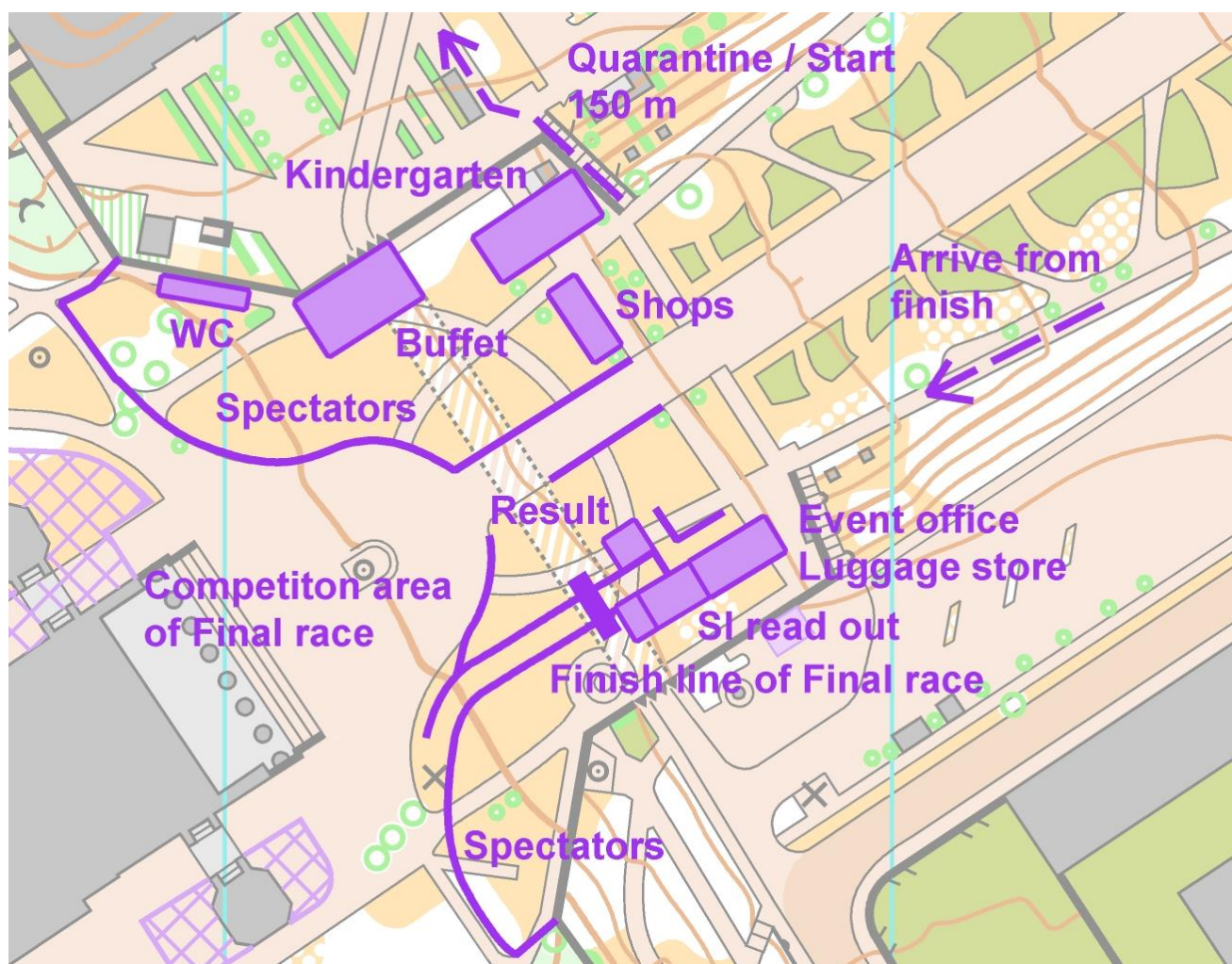
SI READOUT:

The SI card readout at the Competition Center. **Those who do not read out by 12:00 will not be included in the starting list of final race!**

COMPETITION TIME:

60 min

COMPETITION CENTER OUTLINE:



OPEN (NON CHAMPIONSHIP) CATEGORY

START: Between 9:30 and 11:00 AM, at a time of your choice

Place of start: separately from the Championship

Method of start: with SI-box

Start distance: 300 meter along yellow-black tapes

Finish: Distance finish, same as Championship finish.

Get back to Competition Center: 250 meter along yellow-black tapes

SI readout: In the Competition Center, separately from the championship categories.

COURSE DATA:

The distances and elevations are given on the optimal route.

ROB qualification			
Category	Dist. (Km)	Elev. (m)	Controls
F14-1	2,1	40	18
F14-2	2,1	40	16
F14-3	2,1	40	18
F14-4	2,1	40	16
F16-1	2,3	50	17
F16-2	2,3	50	19
F18-1	3,1	70	22
F18-2	3,1	70	23
F20	3,2	70	23
F21-1	3,4	70	25
F21-2	3,4	70	26
F21-3	3,4	70	25
F35	3,2	70	23
F40-1	3,1	70	22
F40-2	3,1	70	23
F45-1	3	70	20
F45-2	2,9	70	22
F50-1	2,7	60	19
F50-2	2,7	60	19
F55-1	2,6	60	17
F55-2	2,6	60	18
F60	2,4	50	18
F65	2,1	40	18

Category	Dist. (Km)	Elev. (m)	Control
N14-1	1,9	40	14
N14-2	1,9	40	12
N14-3	1,9	40	15
N16-1	2,1	40	18
N16-2	2,1	40	16
N18	2,7	60	19
N20	2,9	60	21
N21-1	3	70	20
N21-2	2,9	70	22
N35	2,9	60	21
N40	2,6	60	17
N45-1	2,4	50	18
N45-2	2,4	50	17
N50-1	2,3	50	17
N50-2	2,3	50	19

OPEN	2,3	60	15
------	-----	----	----



Sprint Championship (ROB) Final

COMPETITION CENTER:

Esztergom, Szent István tér, area in front of Basilica (GPS: 47.799378, 18.737997)

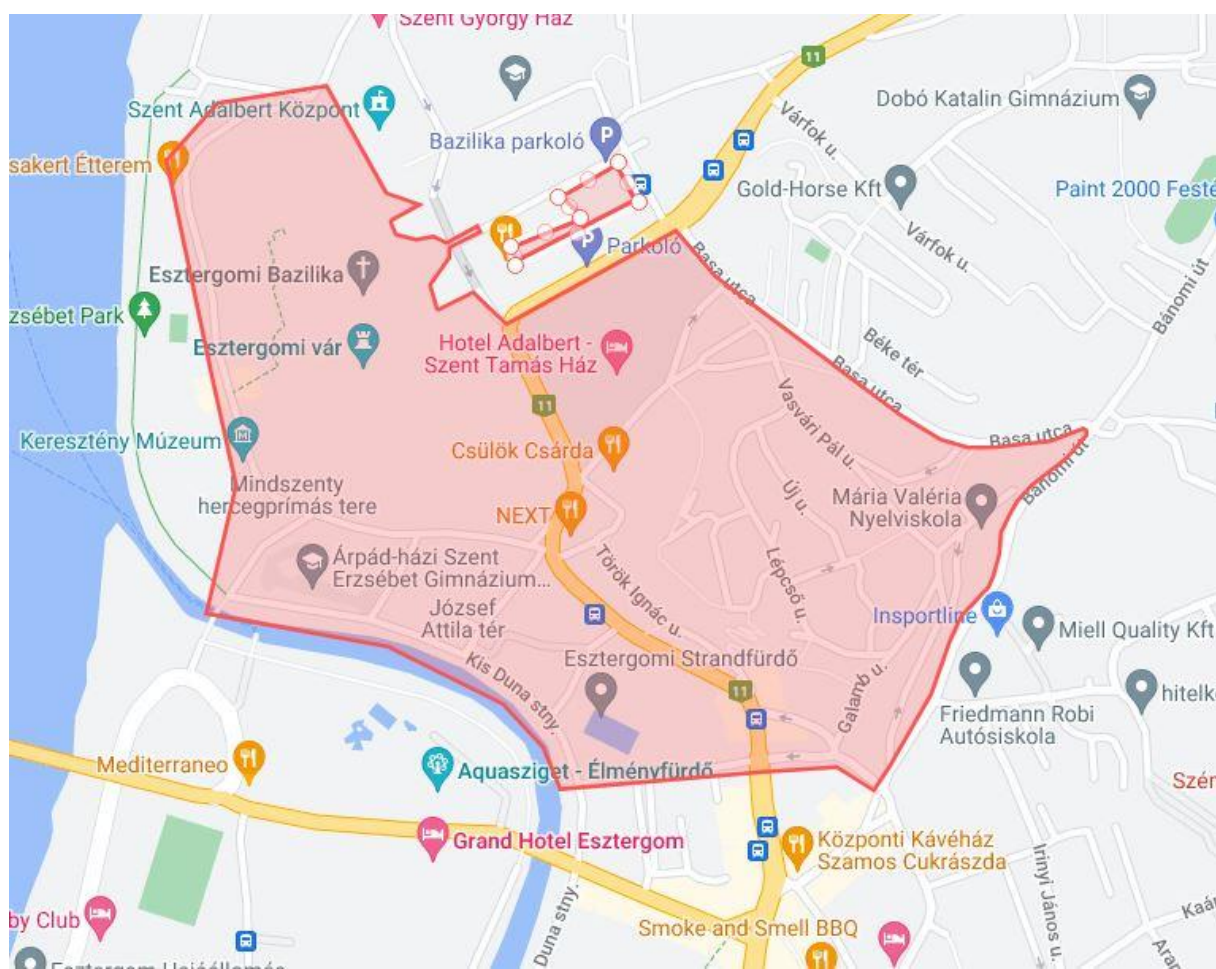
PARKING:

There will be no organized parking.

Parking in the city center is free in most places on Saturday and Sunday.

A limited number of parking spaces are available around the competition center! We recommended using more distant parking lots and approaching the competition center area on foot! If possible, leave your vehicles near the accommodation.

EMBARGOED AREA:



In area the orienteering activities (navigating with map, testing a route) are forbidden until the end of the race. Before the competition and during the race (**September 17 12:30-18:00**) **only competitors are allowed to stay!** Violators may be disqualified from the competition!



Between two races the shopping, lunch at a restaurant and access of vehicles are allowed in the city center, but in this case you have to leave the restricted areas to 12:30

„0” time: 14:30

Closing of quarantine: 14:45

STARTS and QUARANTINE:

Number Start 1 and quarantine:

For categories: F/N 14-65, F70 and F75

- Competition Center – Quarantine distance: 1450 m, 0 m elevation orange tape
- Entrance of quarantine - Prestart: 200 m, 0 m elev., blue-white tape
- Prestart - Start: 600 m, 10 m elev., blue-white tape

It is mandatory to follow the tapes!

The start quarantine is open at 8:20 AM and **everyone must enter to 14:45!**

Sufficient number of toilet are available in the quarantine.

There is enough spacing for warming up.

Additional symbols can pick up at Prestart.

Please take care of cleanliness!

HOW TO START:

- 15 min: departure from prestart
- 4 min: admission
- 3 min: clean, check, SIAC test
- 2 min: start number check
- 1 min: standing next to the map
- 0 min: start

The map start is located 30 meters from the time start along the mandatory route.

Number Start 2 and related informations:

These categories start from a separate start without quarantine:

W70, W75 and W80

M80 and M85

- Competition Center - Start 2: 100 m, 0 m elevation, yellow-black tape.
- Method of start: Traditional 3 minutes start-up time

Since there is no quarantine for the oldest categories, and we do not collect the maps from the competitors who finished, we especially ask competitors to follow the rules of fair plays!

START NUMBERS for FINAL:

The „A” finalist of W/M 21A categories will received a new starting number for the final, which they must wear.

The start number must be worn in two copies: one on the chest, one on the back.

New start numbers must pick up in the quarantine building.

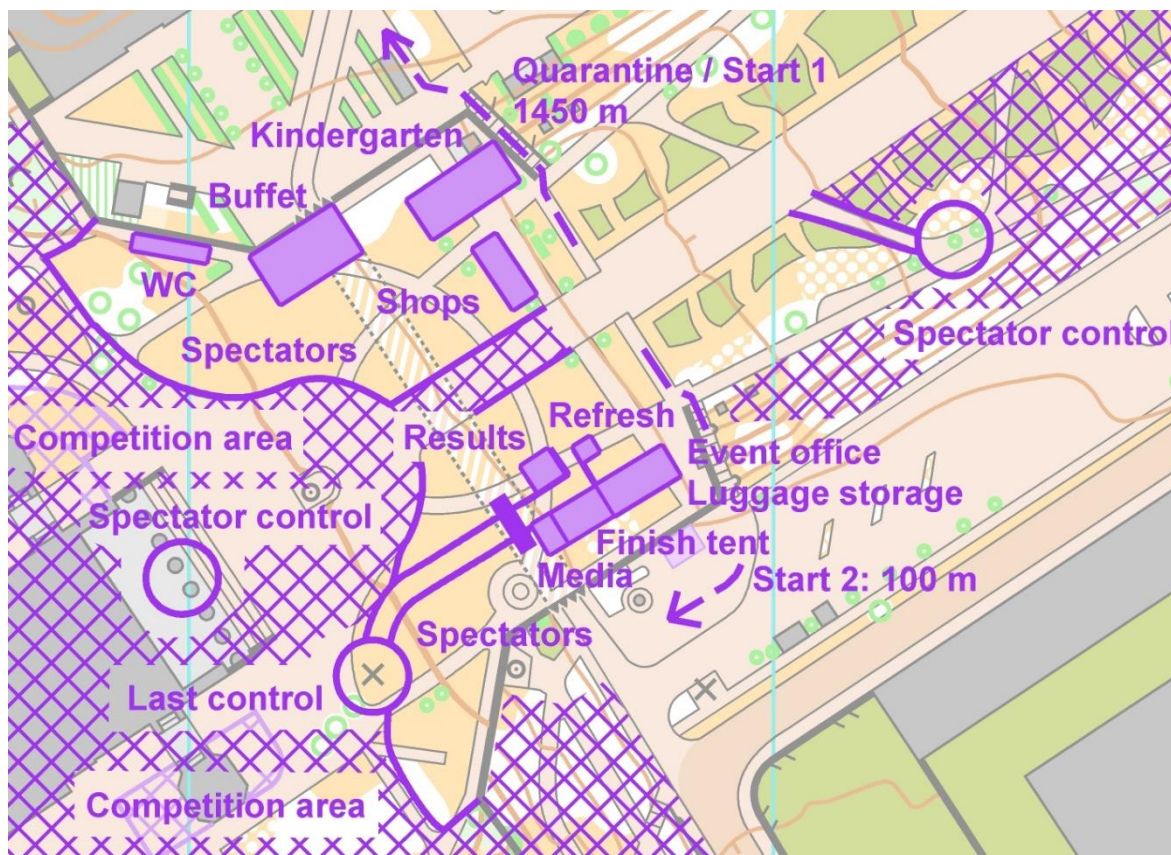
Everyone should bring a safety pin!

START PLAN for FINAL:

Category	First start	Interval
F14-A	62	1
F14-B	26	1
F14-C	26	1
F14-D	1	1
F14-E	2	1
F14-F	28	1
F16-A	86	1
F16-B	46	1
F16-C	1	1
F18-A	90	1
F18-B	69	1
F20-A	98	1
F20-B	55	1
F21-A	151	1
F21-B	71	1
F21-C	21	1
F21-D	1	1
F35-A	76	1
F35-B	1	1
F40-A	53	1
F40-B	1	1
F45-A	88	1
F45-B	1	1
F45-C	10	1
F45-D	36	1
F50-A	13	1
F50-B	13	1
F50-C	1	1
F55-A	45	1
F55-B	1	1
F60-A	26	1
F60-B	28	1
F65-A	41	1
F65-B	38	1
F70-A	51	2
F75-A	50	2
F80-A	21	2
F85-A	15	4

Category	First Start	Interval
N14-A	85	1
N14-B	58	1
N14-C	51	1
N14-D	37	1
N14-E	63	1
N16-A	88	1
N16-B	1	1
N16-C	77	1
N18-A	68	1
N18-B	42	1
N20-A	98	1
N20-B	34	1
N21-A	113	1
N21-B	69	1
N21-C	17	1
N35-A	46	1
N35-B	1	1
N40-A	92	1
N40-B	25	1
N45-A	47	1
N45-B	1	1
N50-A	64	1
N50-B	14	1
N55-A	50	2
N60-A	83	2
N65-A	21	2
N70-A	2	2
N75-A	1	4
N80-A	3	4

FINISH OUTLINE:



TERRAIN:

The terrain can be divided into two significantly different types of parts. The first half of the course use the winding streets and stairs with a significant level difference of the Szenttamás district, the second half covers the park around the Basilica. The courses starting from Start 2 run only in the park around the Basilica.

The ratio of the solid cover approx. 90% Runnability and visibility excellent, enables high speed running.

There may be minimal car traffic in some parts of the terrain, please run carefully! When it rains, the terrain (both grassy areas and paved streets) can become very slippery.

Recommended running clothing: training or cross-country shoes, with short-legged clothing. The use of spiked shoes prohibited!

MAP:

ISSprOM 2019-2, Surveyed in 2022.

Scale, contour and size:

W/M 14-21 categories:	1:4000 / 2m, A4
W/M 35+ categories:	1:3000 / 2m, A3

The maps are digitally printed on waterproof Pretex paper, so we do not provide foil.



The map was made by Gábor Forrai Gábor and Miklós Forrai.
The code will not be shown in addition to the number of the points on the map.

SYMBOLS – EXTRA SYMBOL:

The symbols can be found on the map, be also provide extra symbol.
The extra symbol can be picked up at prestart in case of start 1, and at 2. minute in case of start 2
We provide adhesive tape and scissors to put it on.

CROSSING POINT:

All the course starting from start 1 touch a spectacular crossing point.

FINISH:

The finish of final we be in Competition Center.
The maps do not have to take out.

COMPETITION TIME: 60 minutes

PRIZE GIVING CEREMONY:

The scheduled time is 18:00 on the square in front of the Basilica.



COURSE DATA:

The distances and elevations are given on the optimal route.

ROB Final

Category	Dist. (Km)	Elev. (m)	Control
F14-A	2,8	90	19
F14-B	2,4	70	16
F14-C	2,1	50	17
F14-D	1,9	40	15
F14-E	1,7	40	14
F14-F	1,7	40	14
F16-A	2,8	100	20
F16-B	2,6	80	19
F16-C	2,2	60	16
F18-A	3,4	110	21
F18-B	3	100	20
F20-A	3,6	120	23
F20-B	3,6	120	23
F21-A	3,6	120	23
F21-B	3,6	120	23
F21-C	3,6	120	23
F21-D	3,6	120	23
F35-A	3,4	110	21
F35-B	3,1	100	19
F40-A	3,4	110	21
F40-B	3	100	20
F45-A	3,1	100	19
F45-B	2,8	100	20
F45-C	2,6	80	19
F45-D	2,6	80	19
F50-A	3,1	100	19
F50-B	2,8	90	19
F50-C	2,3	60	18
F55-A	3	100	20
F55-B	2,7	80	18
F60-A	2,8	100	20
F60-B	2,5	80	17
F65-A	2,7	80	18
F65-B	2,3	60	18
F70-A	2,4	70	16
F75-A	2,2	60	16
F80-A	1,3	30	13
F85-A	1,2	20	12

Category	Dist. (Km)	Elev. (m)	Control
N14-A	2,6	80	19
N14-B	2,3	60	18
N14-C	1,9	40	15
N14-D	1,7	40	14
N14-E	1,7	40	14
N16-A	2,8	90	19
N16-B	2,4	70	16
N16-C	2,1	50	17
N18-A	3,1	100	19
N18-B	2,8	90	19
N20-A	3,2	110	22
N20-B	3,2	110	22
N21-A	3,2	110	22
N21-B	3,2	110	22
N21-C	3,2	110	22
N35-A	3,1	100	19
N35-B	2,8	90	19
N40-A	3	100	20
N40-B	2,7	80	18
N45-A	2,8	100	20
N45-B	2,5	80	17
N50-A	2,7	80	18
N50-B	2,3	60	18
N55-A	2,5	80	17
N60-A	2,3	60	18
N65-A	2,2	60	16
N70-A	1,5	30	15
N75-A	1,3	30	13
N80-A	1,2	20	12





Sprint Relay Championship (ORVB)

COMPETITION CENTER:

Esztergom, Erzsébet park, GPS: 47.798416, 18.733615

APPROACH:

Approaching and leaving the competition center is only possible on foot from north, avoiding the prohibited areas. It can be reached from city center by going around the castle hill. **More details on the info map!**

PARKING:

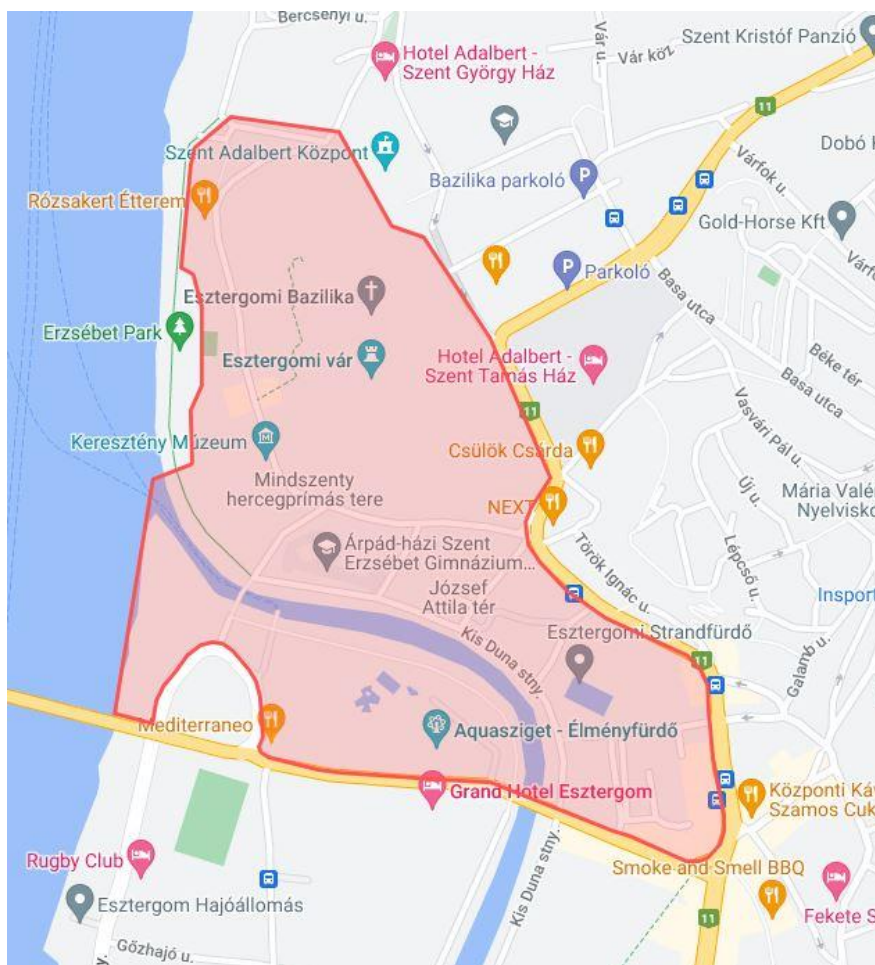
There will be no organized parking.

Parking in the city center is free in most places on Saturdays and Sundays as well.

There is no parking around the Competition Center! We recommend using more distant parking lots and approaching the Competition Center on foot! If possible, leave your vehicle near the accommodation.

EMBARGOED AREA:

In the prohibited area marked on the info map orienteering activities (navigating with map, testing a route, exploring different areas etc.) are prohibited until the end of the race. Before the competition and during the race **September 18 8:00-14:00 only as competitor allowed to stay!** Violators may be disqualified from the competition!



OUTLINE OF FINISH AREA:

„0” TIME: 10:00 AM

MASS STARTS TIME:

10:00 - V14
10:10 - V195
10:20 - V105
11:15 - V18
11:25 - V135
12:20 - V21
12:30 - V165

SUBMISSION of RELAY MEMBERS:

Members of relays can be submitted by name via the e-nevezés system until September 17, 2022 at 8:00PM. We recommend that the runners are entered in days before the race, so that only possible changes need to be entered at the location of the race. The line-ups will be made public one hour before the zero time, so that all competitors can check that they have received the correct starting number.

CHARACTERICS of RELAY COMPETITION:

In categories V14A, V18A and V21A the relays consist of four people, two females and two males. The competitors run in fixed order: female-male-male-female.

In the V105, V135, V165 and V195 categories, the relays consist of three people, one female and two males. The competitors running on courses of different lengths that are randomly distributed between them. The running order of tracks is fixed: long-short-medium track. In the relays female competitor can run on a men's course, but a man cannot run on women's course.

TYPE of COMBINATION:

Farsta

DISTANCE of MAP START:

100 m, 0 m level, mandatory route

MASS START:

It will be next to the runway. Line up for the mass start five minutes before start.

CLEAR, CHECK of SI CARD:

Boxes for clear, check and SIAC test will be placed at entrance to the transition zone and at the mass start. We recommend using them well before the mass start or entering the transition zone.

RUN TROUGH:



All runners of each category must catch a crossing point that clearly visible from the finish area. From the run to the finish, depending on category, 6-800m (approx. 3 min). It is the responsibility of teams to watch the passage of their partner.

CHANGEOVER:

The relay partner of competitor passing through the crossing point enters the relay zone, where he picks up the rolled-up map corresponding to his own start number, after which he cannot leave the area. The map can only be unfolded (and the rubber can be removed) after the changeover by clapping of hands. The finisher catches the finish box behind the finish line after the changeover.

DECISION of PLACES:

In case of tight finish, the plane of the body is decisive at the moment of crossing the finish line, regardless of order of subsequent touching of the finish box.

PRESENTATION:

We will present the changeover, run-through, map pick up and arrival at the finish line 15 minutes before the first start.

MASS START FOR RUNNERS STILL WAITING AT THE FINISH:

Scheduled time: 13:30

MAP TAKE OUT:

All runners must put their map in the club's map holder bag. You can only leave the changing zone after this! Get the competition map possible after 1:30 PM

TERRAIN:

Esztergom - Víziváros Varied urban terrain with cobblestone streets, parks, waterfront promenades, courtyards and multilevel buildings. In the terrain the elevation is not significant. Runnability and visibility excellent make a high-speed possible.

Most of the terrain is not closed to vehicular traffic. In general light traffic is expected. Run carefully! 90% of the tracks are paved. Recommended running clothing: cross-country or training shoes with short legged clothing.

The use of spiked shoes is prohibited!

MAP:

ISSprOM 2019-2, Surveyed in 2022.

Scale, contour and size:

: V14, V18, V21 categories 1:4000 / 2m, A4
V105, V135, V165, V195 categories 1:3000 / 2m, A3

The maps are digitally printed on waterproof Pretex paper, so we do not provide foil. The map was made by Gábor Forrai Gábor and Miklós Forrai. The code will not be shown in addition to the number of the points on the map.

**SYMBOLS – EXTRA SYMBOL:**

The symbols can be found on the map, extra symbol not provided.

COMPETITION TIME: 60 min/pers

PRIZE GIVING CEREMONY: Scheduled time: 14:00.

COURSE DATA:

In this table the distances and elevations are given on the optimal route. In the maps the distances in air line.

ORVB				
Category	Runner	Dist. (Km)	Elev. (m)	Control
V14	1-4	3,3	20	19
	2-3	3,7	20	21
V18	1-4	3,5	20	19
	2-3	4	20	24
V21	1-4	3,8	20	23
	2-3	4,1	20	25
V105	1	4	20	25
	2	3,5	20	19
	3	3,9	20	24
V135	1	3,8	20	22
	2	3,3	20	18
	3	3,5	20	19
V165	1	3,5	20	19
	2	3	20	17
	3	3,3	20	18
V195	1	3,1	20	18
	2	2,3	20	13
	3	2,9	20	16
OPEN		3,6	20	21

OPEN (NON CHAMPIONSHIP) CATEGORY:

Competition Center-Start distance:
START:

30 m, 0 m elevation (at mass start)
13:15-kor Mass start, Farsta courses

GENERAL TECHNICAL INFORMATION FOR THE RACES:

POINT MOUNTING:

Stand, orange-white bouy, punch stamp, SI box

POINT CATCHING:

The competition is organized with the SPORTident electronic system. If the SI box does not indicate, then the map must be punched. The SI boxes will be programmed for non-contact mode, the range approx.- 30 cm. We draw your attention to point 17.6 Missing electronic point catching of the Competition Regulation!

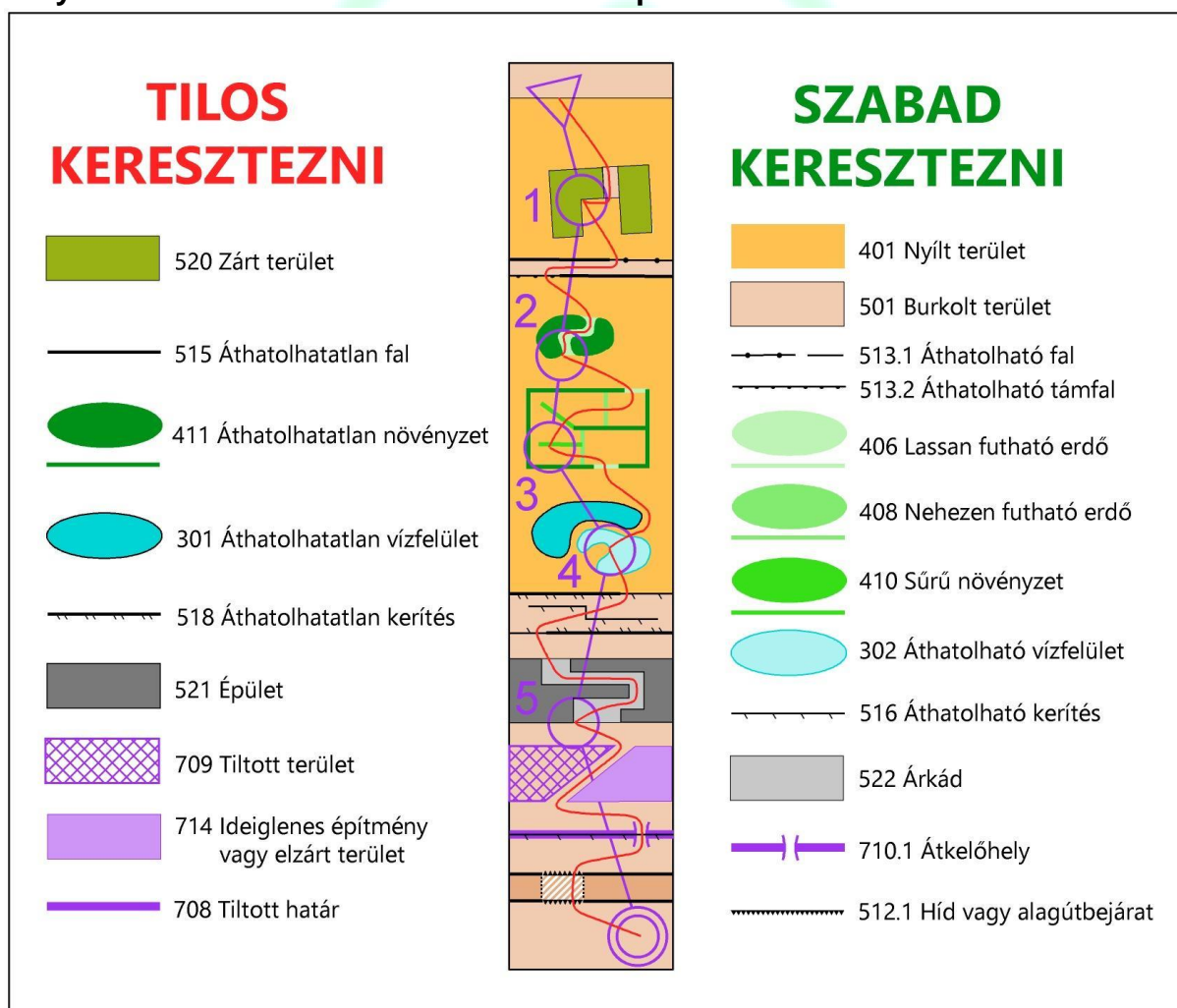
MARKING FORBIDDEN AREAS ON THE MAP:

The map depicts prohibited and crossable objects according to the ISSprOM 2019 standard.

Marks on the map that are prohibited to cross:

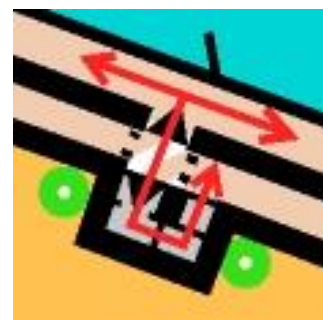
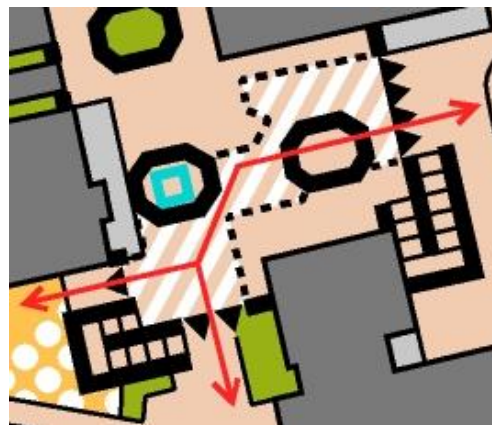
Objects that are shown as prohibited on the map but their boundaries are not clear on the ground will be cordoned off or marked with tape and competition judge will watch for violators of the rules

Anyone who violates the rules will be disqualified from the race!



MULTI-LEVEL BUILDINGS ON THE MAP:

The map depicts multi-level buildings according to the ISSprOM 2019-2 standard. Both levels of such buildings can be walked on. The sample the upper level approx. close a 45° angle with the direction of lower level. If there is another surface on the upper level, the pattern must be used in its color.



For the changing room at the beach the drop-ins shown in this picture are not shown on the map. The upper level has been shown in these places.

GROUPS IN FINAL:

From qualifiers of the category:

- In case of 48 or more participants, 24 people will go to the A final, the next 24 to B final and so on. Competitors with foreign citizenship are included in the number of participants;
- In case of between 10 and 47 entrants, 50 % of the entered competitors in each race – rounded up in case of an odd number of entrants – will go to the A final, the others to the B final;



- In case of 9 less entries, all competitors will go to the A final
If the number of 5 people in one of the finals from qualifier cannot be ensured in the final, then the competitors concerned can start with one higher classification.

TRAINING MAP:

From September 10, 2022, it will be possible to use the training terrain located in the immediate vicinity of competition terrain, with map that can be downloaded from the MTFSZ webpage. Checkpoints marked on the training map are virtual, they are not marked on the terrain.

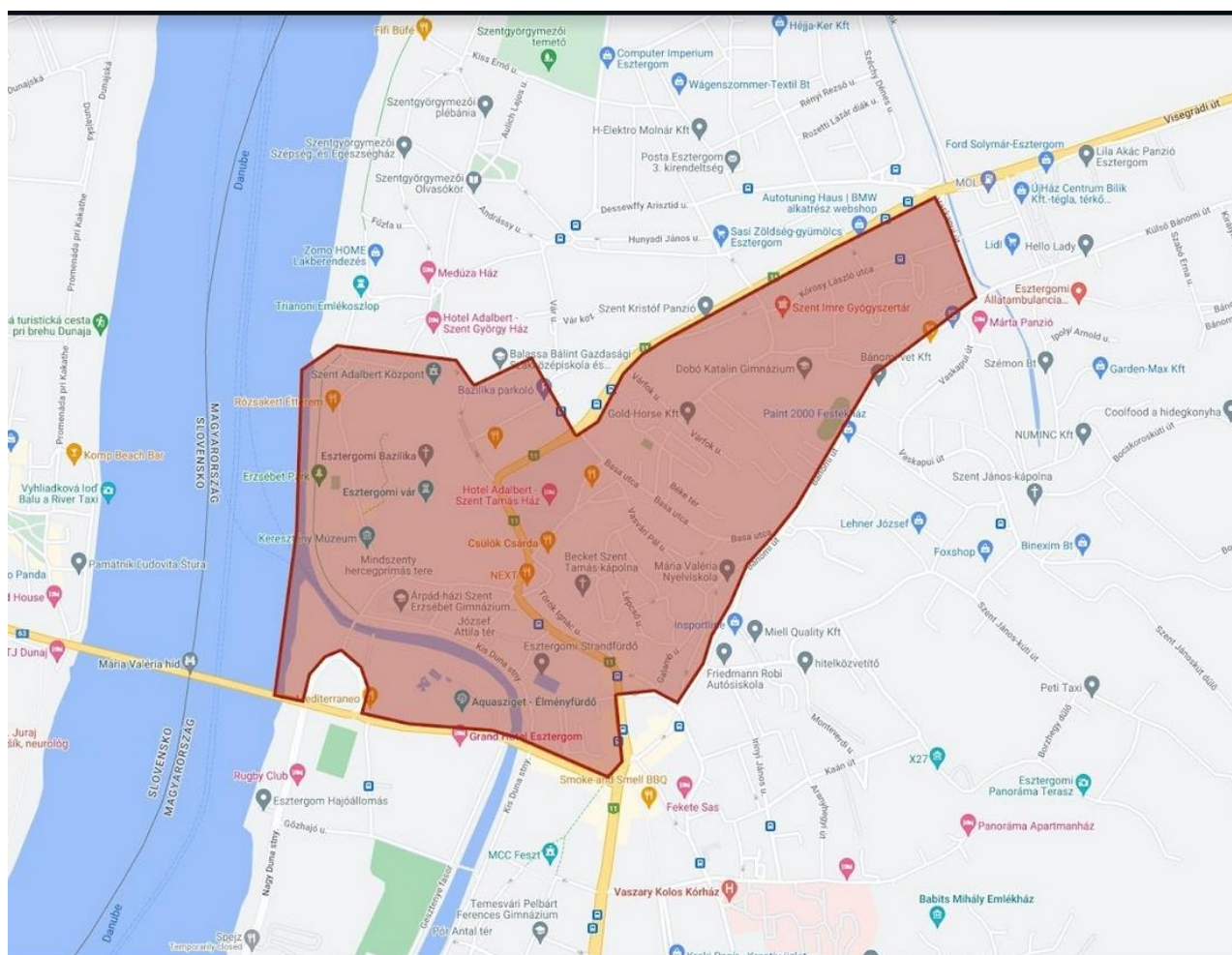
Training map link:

1:4000 A5: http://admin.mtfisz.hu/fajl/get/fajl_id/28560/tipus/render

1:3000 A4: http://admin.mtfisz.hu/fajl/get/fajl_id/28561/tipus/render

At the same time, **the embargoed area** on orienteering activities until the day of the race was also updated. Currant embargoed area:

<https://www.google.com/maps/d/u/0/viewer?mid=1js9IK1QIBmSBaA4kxzPgTjIXhbmOYHE5&ll=47.79963662230292%2C18.743050491278083&z=15>



*WE WISH YOU A SUCCESSFUL
COMPETITION!*



MAIN SPONSORS:



Nagyboldogasszony és
Szent Adalbert Főszékesegyház
Esztergom



TÁMOGATÓNK:



Magyar Honvédség



József Attila
Általános Iskola



Árpádházi Szent
Erzsébet Iskola



Vitéz János Katolikus Iskola
Vitéz János Katolikus Iskola



Dobó Katalin
Gimnázium



Esztergomi Szak-
képzési Centrum



Esztergomi
AquaSpa Sziget



Aszalma Projekt



Fischer-Bau
Építőipari Kft.



M20 Generál Kft.
Veszprém



Liget Budapest Projekt



Szent István
Strandfürdő



Magyar Építők



Ladó-Rec Kft.
HULLADÉK-NAGYKERESKEDELEM

Ladó-Rec Hulladék-
nagykereskedelmi és
Szolgáltató Kft.



Balassa Bálint Múzeum Esztergom



Zöld-Út, Esztergom



Neuzer Kerékpár Kft.

COMPETITION INFORMATION
Sprint & Sprint Relay Championship ESZTERGOM 2022.