

TIPO Cup 2014

2nd – 4th May 2014

Tipo Cup Relay

3rd May 2014

and

Szélrózsa Night-O Cup

1st May 2014

Pusztamarót

INVITATION

Organizers: Tipo TKE, Pozsonyi út 52, 1133 Budapest, Hungary
Tájoló Erdei és Tájékozódási Sportok Foundation, Határőr út 53/a., 1122 Budapest, Hungary

Sponsor: Stratis Vezetői és Informatikai Tanácsadó Kft.

| | | |
|------------------------|-----------------------|----------------------------------|
| Course setters: | Szélrózsa Night-O | Eszter Tóth |
| | Tipo Cup Day 1 and 3: | Ágnes Wengrin and László Faggyas |
| | Tipo Cup Day 2: | Vilmos Lengyel |
| | Tipo Cup Relay: | Gábor Baracsi |

| | | |
|---------------------|-------------------|-----------------|
| Controllers: | Szélrózsa Night-O | Zoltán Gyulai |
| | Tipo Cup Day 1: | János Pápai |
| | Tipo Cup Day 2: | Ákos Bossánszky |
| | Tipo Cup Day 3: | Antal Peics |
| | Tipo Cup Relay: | Ákos Bossánszky |

Event Centre: Pusztamarót (47°41'18"N, 18°31'12"E)

Terrain: Typical Central-European moderately hilly terrain located 300-500 metres above sea level. Oak forest with good runability and visibility, lots of vegetation features like rootstocks, clearings and small thick undergrowth. Locally steep slopes with cliffs and rock boulders require demanding orienteering technique. Newly mapped parts and a technically demanding area for the middle distance race.

Maps: 1:15 000, 1:10 000 and 1:7 500 (middle distance) /5m maps, according to IOF standards, corrected in 2013-14.

Map makers: Martin Hajdu, Vilmos Lengyel, Attila Molnár and Péter Vityi.

Classes:

Tipo Cup: M/W 10D,DK 12C,D, 14E,C, 16E, 18E, 15-18C, 20E, 21E,B,Br,C, 35A,Br, 40, 45, 50, 55, 60, 65, 70; M75, M80, Open Advanced (OA), Open Beginner (OB). Organisers reserve the right of merging categories in case of low number of entries.

Szélrózsa Night-O: M16B, M18B, M21A, M21Br, M35A, M40, M45, M50, M55, M60, M65, M70; W18B, W21A, W21Br, W35A, W45, W55, Open Advanced (OA), Open Beginner (OB). Organisers reserve the right of merging categories in case of low number of entries.

Tipo Cup Relay: Each runner of the **3x1** relays will complete 1 leg. Categories for 3x1 relays are: **F3X1** (men with maximum total age of 42 years), **N3X1** (women with maximum total age of 42 years), **Mi3X1** (short mix, no any restriction on age, sex or club) and **Ms3X1** (senior mix with minimum total age of 180 years, no restriction on sex or club). Course lengths vary between 2-2.5 km.

Each runner of the **3x2** relays will complete 2 different legs (A and B). Runner 1 will also complete leg 4, runner 2 leg 5 and runner 3 leg 6. Categories for 3x2 relays are: **F3X2** (men without age limit), **N3X2** (women without age limit) and **Mi3X2** (long mix, no restriction on age, sex or club). Course lengths vary between 2-2.5 km.

Entries: On-line at <http://entry.mtfsz.hu/>, or e-mail to: nevezes@tipotke.hu, latest by 20th April. E-mail entries will be confirmed with an e-mail reply within two working days. Please repeat your e-mail entry in case no reply is received. Entries for each day separately are also possible. **Please don't forget to include in your entry your SI chip number, category, chosen competition day(s) (if not all 3 days) and accommodation request with list of nights booked.** **Attention!** Individual competitors and clubs not registered at the Hungarian Orienteering Federation (MTFSZ) are requested to provide an e-mail contact with their on-line entry. Entries imply payment commitment!

Entry deadlines and fees:

| TIPO Cup Entries | Received before 10th April | | Received before 20th April | | Later and on-site entry | |
|------------------------------|--|------------------|--|------------------|--------------------------------|------------------|
| | Base fee | | Increased fee | | | |
| Entry type: | All | | On-line and e-mail | | | |
| | 3 Days | 1 Day | 3 Days | 1 Day | 3 Days | 1 Day |
| M/W10D, DK (shadowed) | 3 000 HUF | 1 000 HUF | 3 000 HUF | 1 000 HUF | 3 000 HUF | 1 100 HUF |
| M/W-16, 15-18C, F65-, N60- | 3 000 HUF | 1 100 HUF | 3 500 HUF | 1 300 HUF | 4 000 HUF | 1 500 HUF |
| Br categories (B short) | 6 000 HUF | 2 200 HUF | 6 000 HUF | 2 200 HUF | 6 000 HUF | 2 200 HUF |
| All other ranking categories | 6 000 HUF | 2 200 HUF | 7 000 HUF | 2 600 HUF | 8 000 HUF | 2 900 HUF |
| Open categories (OA and OB) | 3 000 HUF | 1 000 HUF | 3 000 HUF | 1 000 HUF | 3 000 HUF | 1 100 HUF |

| Szélrózsa Night-O Entries | Received before 20th April | Later and on-site entry |
|----------------------------------|--|--------------------------------|
| | Base fee | Increased fee |
| Entry type: | On-line and e-mail | |
| Ranking categories | 1 500 HUF | 1 800 HUF |
| Open categories | 800 HUF | 1 000 HUF |

| TIPO Cup Relay Entries | Received before 17th April | Later and on-site entry |
|-------------------------------|--|--------------------------------|
| | Base fee | Increased fee |
| Entry type: | On-line and e-mail | |
| Each Relay | 3 000 HUF/Relay | 3 600 HUF/Relay |

(1 € = appr. 310 HUF)

In case of changes (ie. category or name), fees applicable at the day of the change made will be charged.

Kid's courses are free of charge, entry on spot.

After Entry deadline entries are only accepted for the empty places of the start list.

Payment: Bank transfer to the bank account of TIPO TKE before 20th April 2014 or on the spot in cash. No card payment is possible!

Bank account details:

IBAN number: HU27 16200106 60250476 000000000

SWIFT code: HBWEHUHB

Please make sure that all bank charges of the transfer are also included in the payment.

Punching: The **SPORTident** electronic punching system will be used. **E-cards** can be rented on the spot (€ 1/day), leaving a deposit of € 50. If you are intending to use your own e-card please specify your SI card number with your entry.

Transportation: There will be no organised local transport, but if you have problems reaching the CC, please let us know in advance or at the registration.

Accommodation and hot meal:

Gym using own gear: on the nights of 2nd and 3rd May at Héreg (7 km from Event Centre): 600 HUF/person/night, on the night of 1st May at the Event Centre: 800 HUF/person/night.

Camping at Event Centre: 800 HUF/person/night.

Bungalows at Event Centre: 2000 HUF/person/night (without bed clothing). 8 beds/room with bunk-beds.

Hot dinner can be ordered at the Event Centre for Days 1 and 2 of TIPO Cup (2nd and 3rd of May) for 1000 HUF/person/meal.

Please order accommodation and dinner together with your entry.

Prizes: There will be awards for the top 3 in all age classes of TIPO Cup. Night-O will be awarded separately. Diplomas will be presented to top 3 of each category of TIPO Cup Relay. No prize giving for Open and DK categories, but results will be published.

Planned starting times:

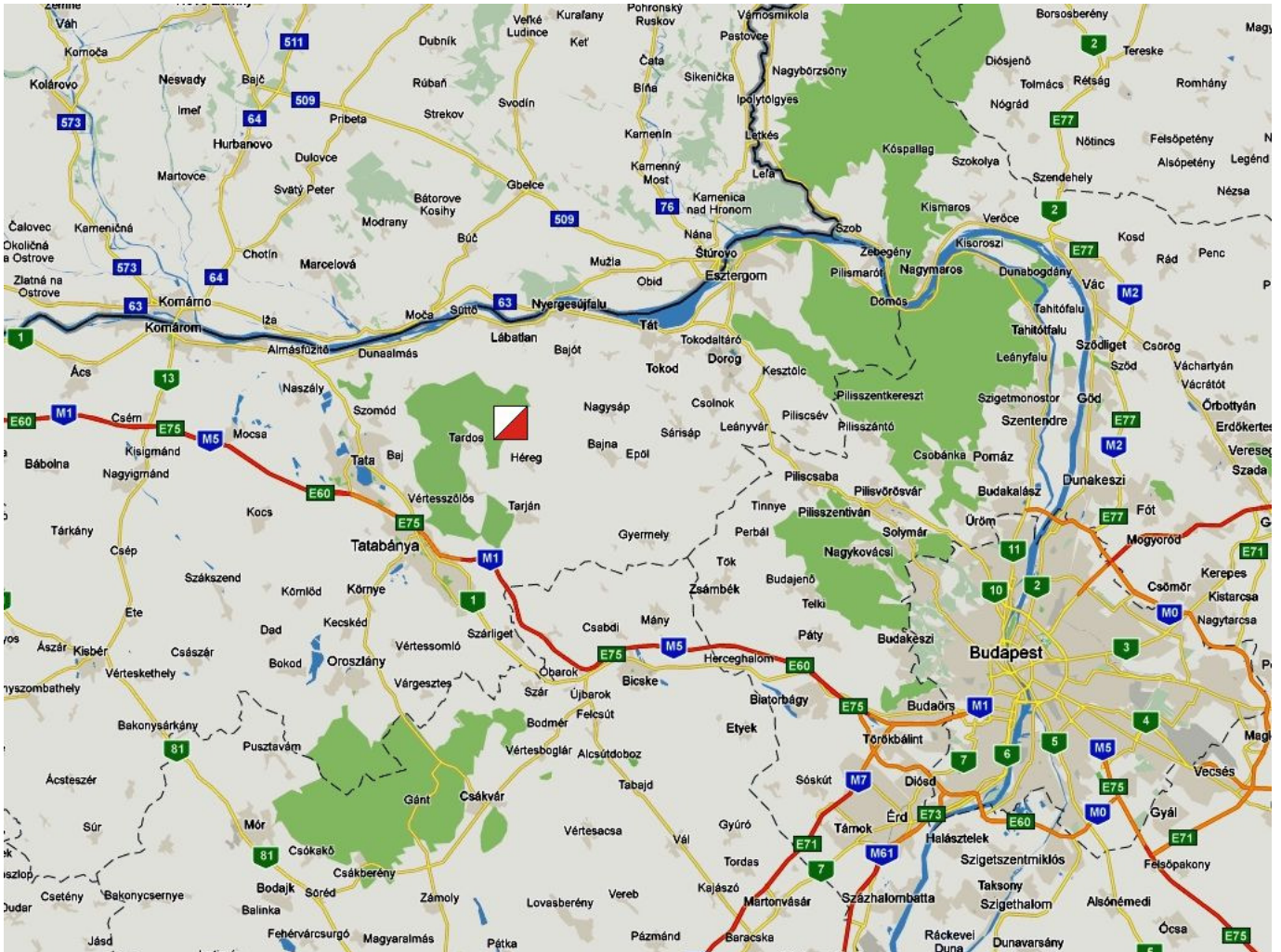
| | |
|--------------------|-------|
| Szélrózsa Night-O: | 21:00 |
| TIPO Cup Day 1: | 12:00 |
| TIPO Cup Day 2: | 10:00 |
| TIPO Cup Relay: | 15:00 |
| TIPO Cup Day 3: | 10:00 |

Internet information: www.tipotke.hu/tipo2014 and www.mtfisz.hu

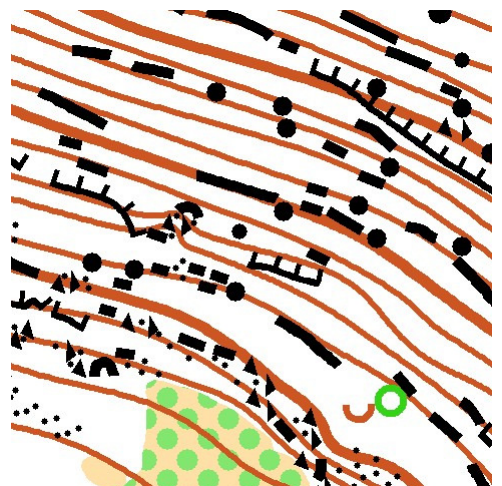
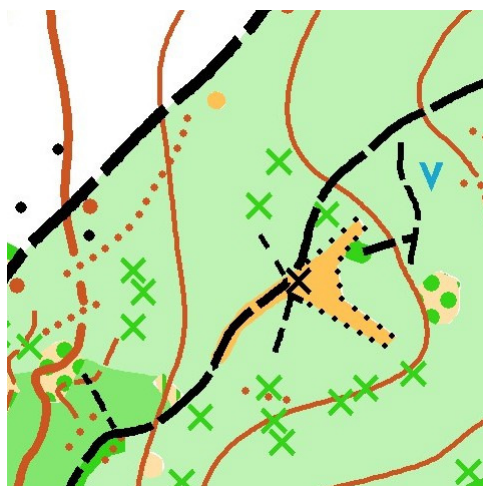
Accompanying programs: Kid's courses await the youngest each day of the TIPO Cup.
Mobile-O in the afternoon of 2nd May

All competitors start at their own risk!

Location:



Map Details:



Szélrózsa Night-0

Categories and planned course lengths

| Category | Distance | Category | Distance |
|----------|----------|----------|----------|
| F/M16B | 4500 | N/W18B | 3300 |
| F/M18B | 5000 | N/W21A | 4000 |
| F/M21A | 8000 | N/W21Br | 2200 |
| F/M21Br | 4500 | N/W35A | 3300 |
| F/M35A | 6000 | N/W45 | 2500 |
| F/M40 | 5600 | N/W55 | 2000 |
| F/M45 | 4700 | | |
| F/M50 | 4200 | | |
| F/M55 | 3800 | | |
| F/M60 | 3400 | | |
| F/M65 | 2200 | NyT/OA | 4000 |
| F/M70 | 2000 | NyK/OB | 1500 |

Open Beginner (NyK/OB) and Advanced (NyT/OA) courses
M/W21Br short, but technically challenging courses

TIPO Cup

Categories and planned course lengths

| Category | Day 1 and 3 | Day 2 | Category | Day 1 and 3 | Day 2 |
|-----------|-------------|-------|-----------|-------------|-------|
| F/M10D | 2800 | 1700 | N/W10D | 2200 | 1700 |
| F/M10DK | 2800 | 1700 | N/W10DK | 2200 | 1700 |
| F/M12C | 3300 | 2200 | N/W12C | 2800 | 1700 |
| F/M12D | 3200 | 2100 | N/W12D | 2800 | 1700 |
| F/M14E | 4800 | 2400 | N/W14E | 3100 | 2100 |
| F/M14C | 4400 | 2200 | N/W14C | 3000 | 2000 |
| F/M16E | 6800 | 3400 | N/W16E | 4200 | 2600 |
| F/M15-18C | 5000 | 3100 | N/W15-18C | 3100 | 2100 |
| F/M18E | 8300 | 4200 | N/W18E | 5600 | 3300 |
| F/M20E | 10000 | 5000 | N/W20E | 6100 | 3300 |
| F/M21E | 12900 | 5600 | N/W21E | 8000 | 4700 |
| F/M21B | 9600 | 4800 | N/W21B | 5600 | 3900 |
| F/M21Br | 5600 | 4700 | N/W21Br | 3200 | 2200 |
| F/M21C | 7100 | 4100 | N/W21C | 4500 | 3500 |
| F/M35A | 10000 | 5000 | N/W35A | 5600 | 3300 |
| F/M35Br | 5300 | 4400 | N/W35Br | 3000 | 2000 |
| F/M40 | 8200 | 4800 | N/W40 | 5000 | 3300 |
| F/M45 | 7300 | 4700 | N/W45 | 4300 | 2200 |
| F/M50 | 6900 | 3800 | N/W50 | 3500 | 2000 |
| F/M55 | 5900 | 3500 | N/W55 | 3000 | 1500 |
| F/M60 | 5000 | 3000 | N/W60 | 3000 | 1500 |
| F/M65 | 3800 | 2400 | N/W65 | 2500 | 1300 |
| F/M70 | 2900 | 2100 | N/W70 | 2500 | 1300 |
| F/M75 | 2500 | 1800 | NyT/OA | 5000 | 3900 |
| F/M80 | 2500 | 1800 | NyK/OB | 3000 | 2000 |

Open Beginner (NyK/OB) and Advanced (NyT/OA) courses
M/W 12D, 10D: Courses taped on detour, M/W 10 DK: Courses taped on detour with accompanying adult
M/W21Br & 35Br short, but technically challenging courses

Organisers reserve the right of merging categories in case of low number of entries